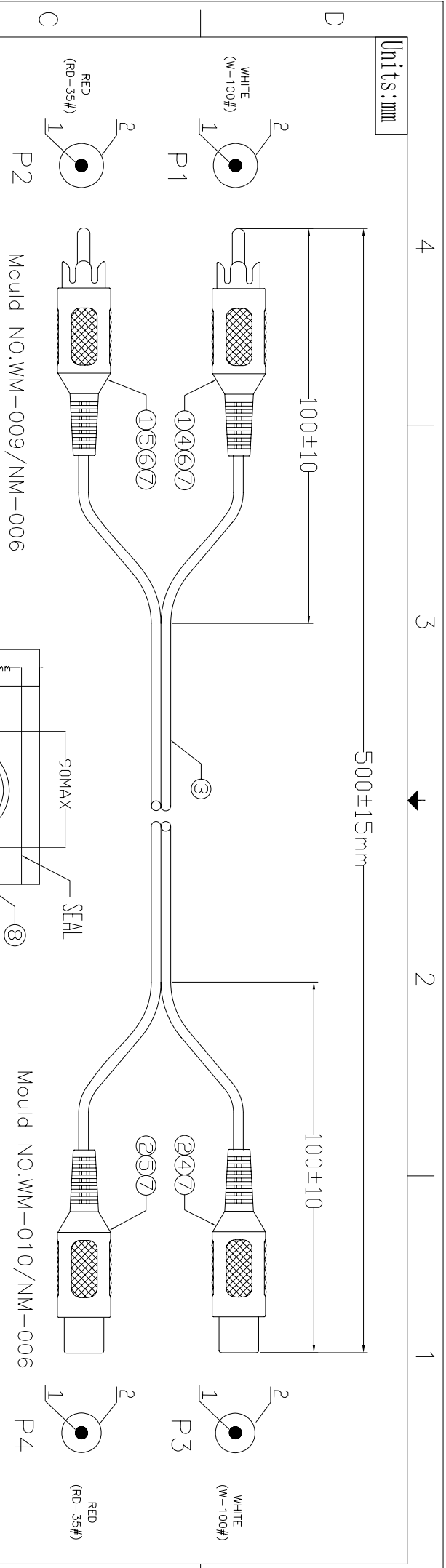
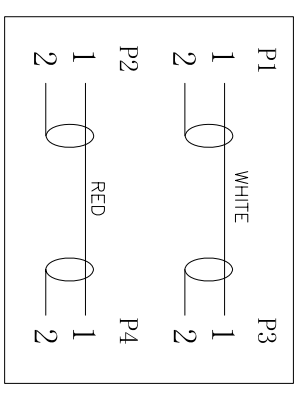


Units: mm

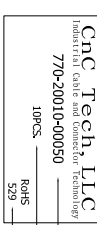


PIN ASSIGNMENT:



Electrical test:
 1. 100% short, open, miswire test
 2. Conduct resistance: 2 Ohm(max)
 3. Insulation resistance: 5Mohm(min)
 4. dielectric test: DC 300V

NOTE:
 1. 小PE袋大PE袋对应料号, 包袋数量及时间印刷样式:

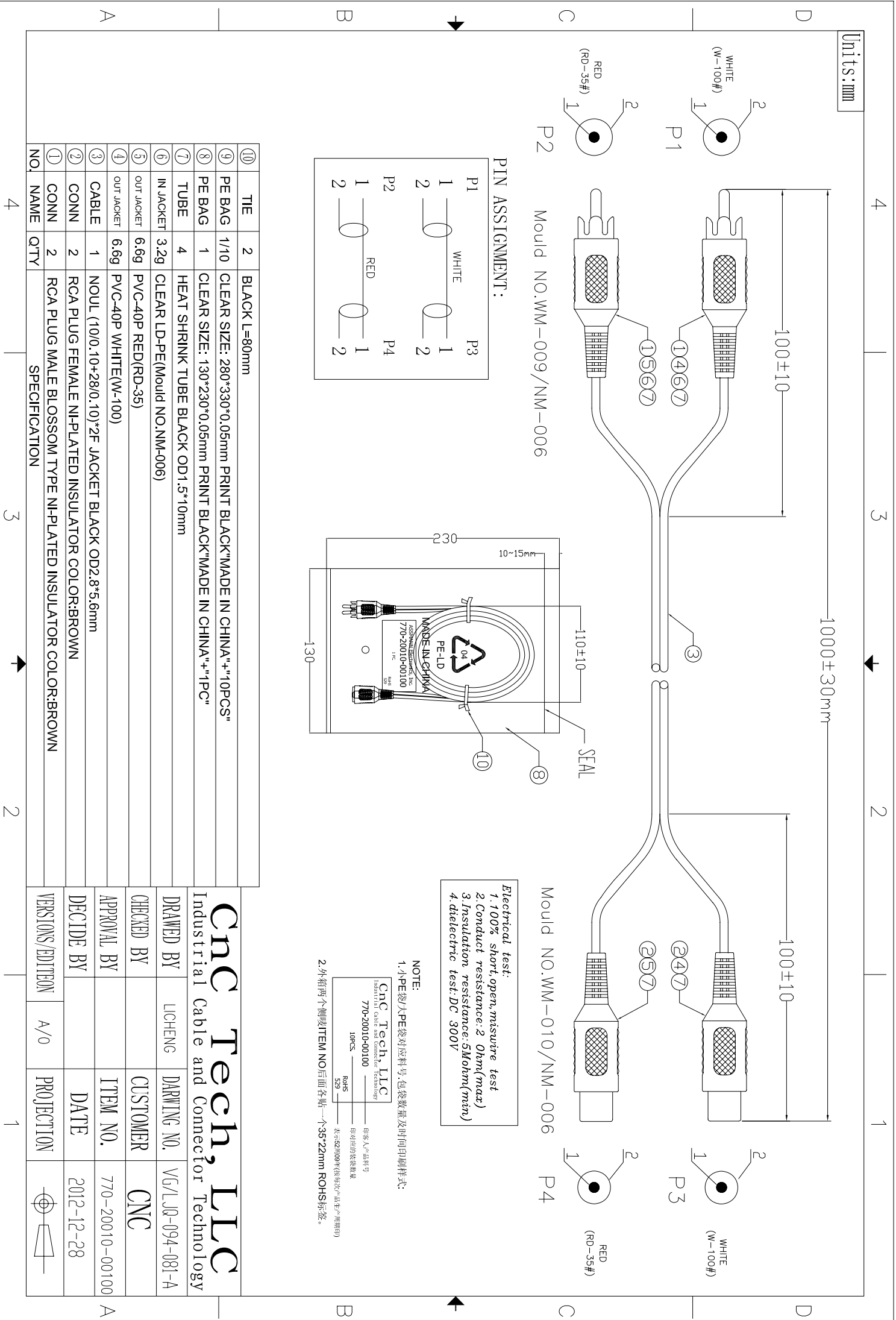


2. 外箱两个侧袋ITEM NO后面各贴一个35*22mm ROHS标签.

⑩	TIE	2	BLACK L=80mm
⑨	PE BAG	1/10	CLEAR SIZE: 230*300*0.05mm PRINT BLACK"MADE IN CHINA"+"10PCS"
⑧	PE BAG	1	CLEAR SIZE: 100*200*0.05mm PRINT BLACK"MADE IN CHINA"+"1PC"
⑦	TUBE	4	HEAT SHRINK TUBE BLACK OD1.5*10mm
⑥	IN JACKET	3.2g	CLEAR LD-PE(Mould NO.NM-006)
⑤	OUT JACKET	6.6g	PVC-40P RED(RD-35)
④	OUT JACKET	6.6g	PVC-40P WHITE(W-100)
③	CABLE	1	NOUL (10/0.10+28/0.10)*2F JACKET BLACK OD2.8*5.6mm
②	CONN	2	RCA PLUG FEMALE NI-PLATED INSULATOR COLOR:BROWN
①	CONN	2	RCA PLUG MALE BLOSSOM TYPE NI-PLATED INSULATOR COLOR:BROWN
NO.	NAME	QTTY	SPECIFICATION

CNC Tech, LLC			
Industrial Cable and Connector Technology			
DRAWN BY	LICHENG	DRAWING NO.	VG/LJQ-094-081
CHECKED BY		CUSTOMER	CNC
APPROVAL BY		ITEM NO.	770-20010-00050
DECIDE BY		DATE	2012-12-28
VERSIONS/EDITION	A/0	PROJECTION	

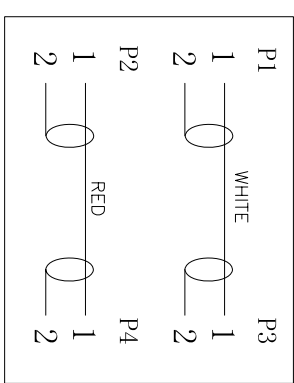
Units: mm



Mould NO. WM-009 / NM-006

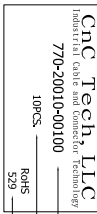
Mould NO. WM-010 / NM-006

PIN ASSIGNMENT:



Electrical test:
 1. 100% short, open, miswire test
 2. Conduct resistance: 2 Ohm(max)
 3. Insulation resistance: 5Mohm(min)
 4. dielectric test: DC 300V

NOTE:
 1. 小PE袋大PE袋对应料号, 包袋数量及时间印刷样式:

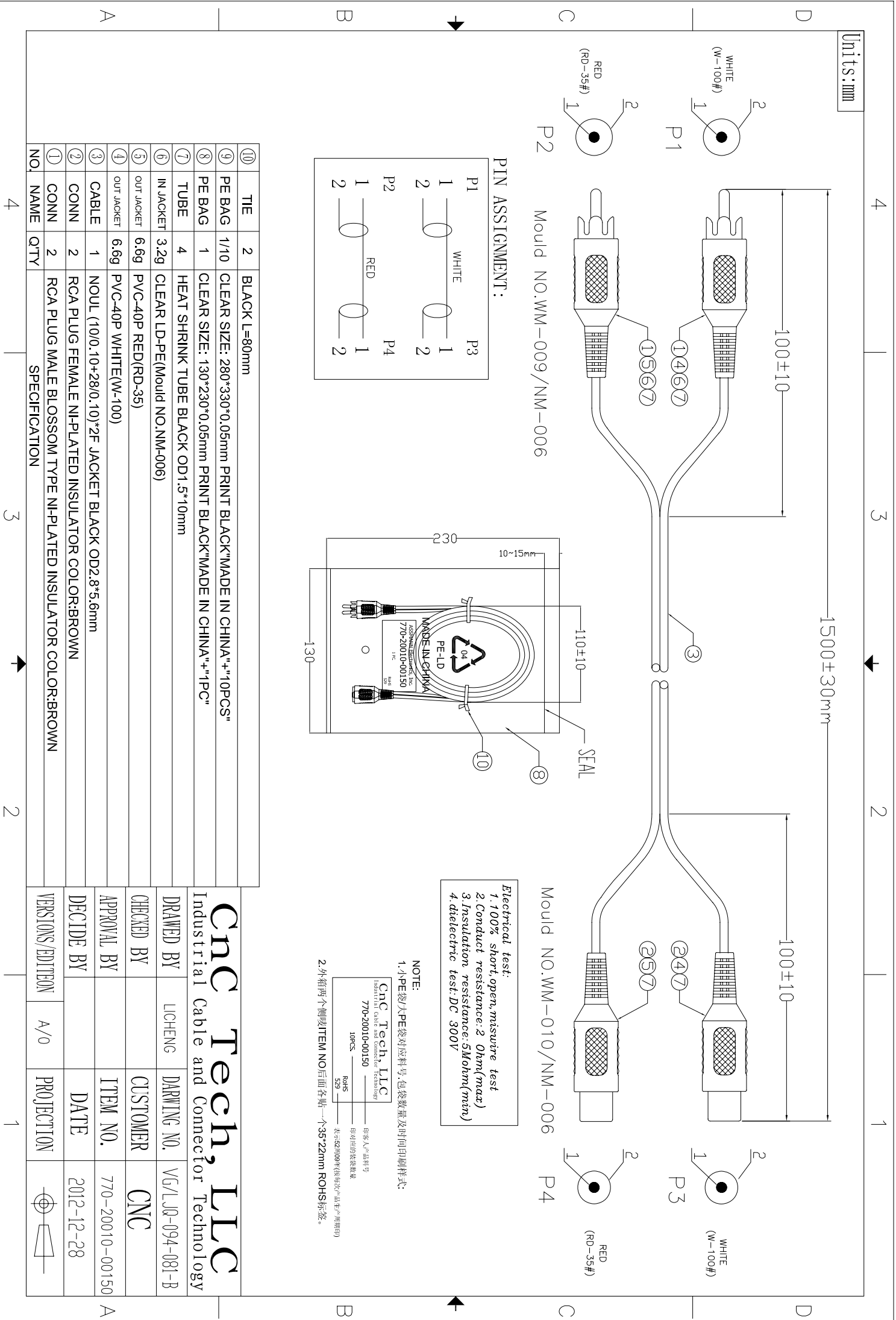


2. 外箱两个侧袋ITEM NO后面各贴一个35*22mm ROHS标签.

⑩	TIE	2	BLACK L=80mm
⑨	PE BAG	1/10	CLEAR SIZE: 280*330*0.05mm PRINT BLACK"MADE IN CHINA"+"10PCS"
⑧	PE BAG	1	CLEAR SIZE: 130*230*0.05mm PRINT BLACK"MADE IN CHINA"+"1PC"
⑦	TUBE	4	HEAT SHRINK TUBE BLACK OD1.5*10mm
⑥	IN JACKET	3.2g	CLEAR LD-PE(Mould NO.NM-006)
⑤	OUT JACKET	6.6g	PVC-40P RED(RD-35)
④	OUT JACKET	6.6g	PVC-40P WHITE(W-100)
③	CABLE	1	NOUL (10/0.10+28/0.10)*2F JACKET BLACK OD2.8*5.6mm
②	CONN	2	RCA PLUG FEMALE NI-PLATED INSULATOR COLOR:BROWN
①	CONN	2	RCA PLUG MALE BLOSSOM TYPE NI-PLATED INSULATOR COLOR:BROWN
NO.	NAME	QTTY	SPECIFICATION

Cnc Tech, LLC			
Industrial Cable and Connector Technology			
DRAWN BY	LICHENG	DRAWING NO.	VG/LJ0-094-081-A
CHECKED BY		CUSTOMER	CNC
APPROVAL BY		ITEM NO.	770-20010-00100
DECIDE BY		DATE	2012-12-28
VERSIONS/EDITION	A/0	PROJECTION	

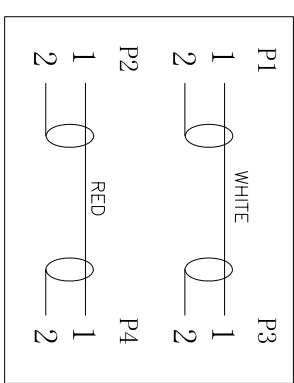
Units: mm



Mould NO. WM-009 / NM-006

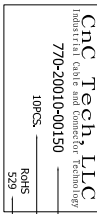
Mould NO. WM-010 / NM-006

PIN ASSIGNMENT:



Electrical test:
 1. 100% short, open, miswire test
 2. Conduct resistance: 2 Ohm(max)
 3. Insulation resistance: 5Mohm(min)
 4. dielectric test: DC 300V

NOTE:
 1. 小PE袋大PE袋对应料号,包袋数量及时间印刷样式:

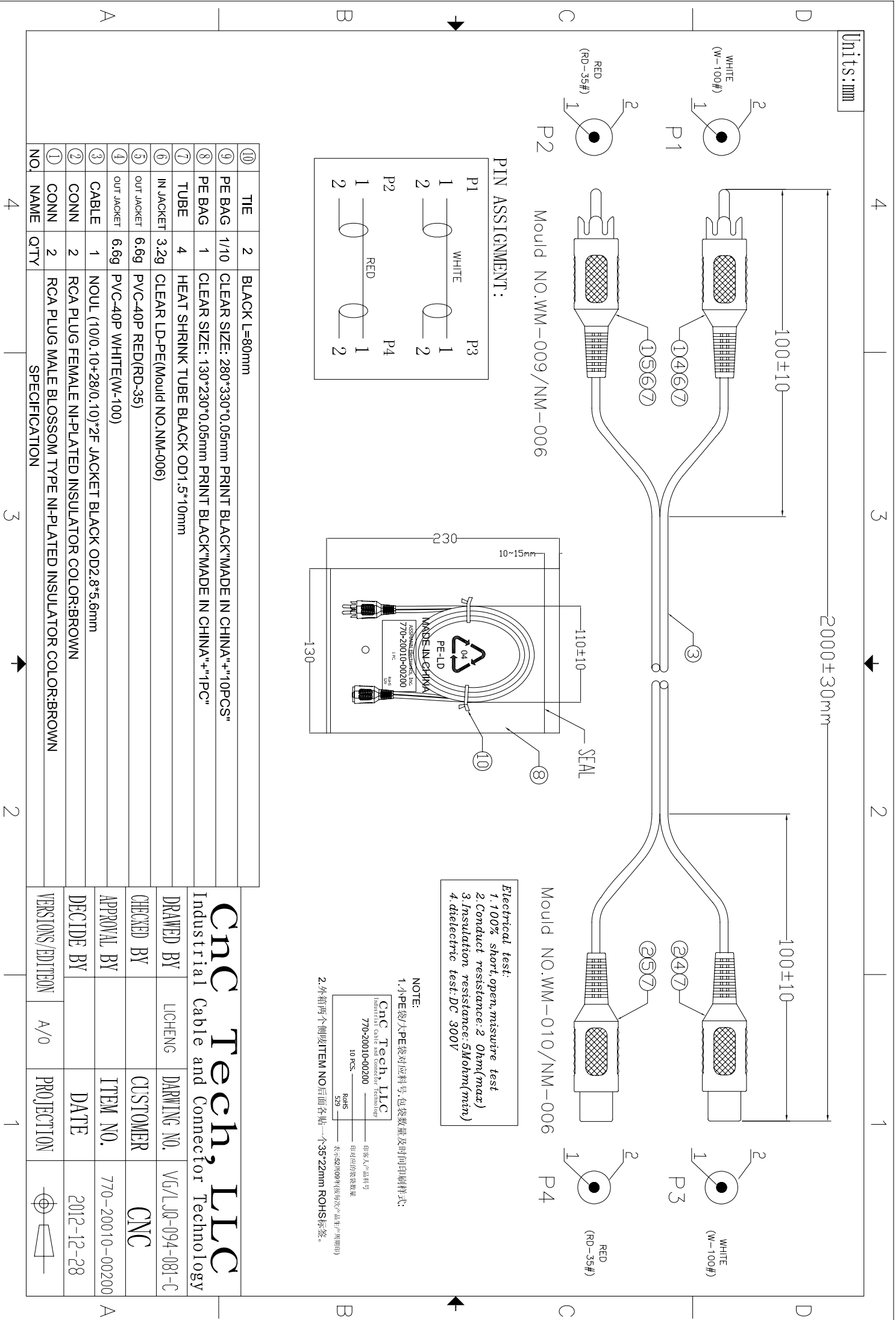


2. 外箱两个侧袋ITEM NO后面各贴一个35*22mm ROHS标签.

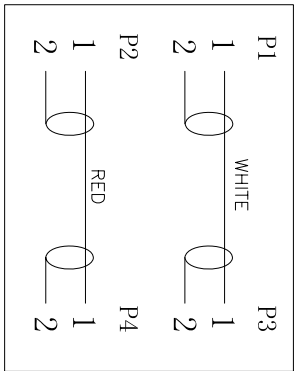
⑩	TIE	2	BLACK L=80mm
⑨	PE BAG	1/10	CLEAR SIZE: 280*330*0.05mm PRINT BLACK"MADE IN CHINA"+"10PCS"
⑧	PE BAG	1	CLEAR SIZE: 130*230*0.05mm PRINT BLACK"MADE IN CHINA"+"1PC"
⑦	TUBE	4	HEAT SHRINK TUBE BLACK OD1.5*10mm
⑥	IN JACKET	3.2g	CLEAR LD-PE(Mould NO.NM-006)
⑤	OUT JACKET	6.6g	PVC-40P RED(RD-35)
④	OUT JACKET	6.6g	PVC-40P WHITE(W-100)
③	CABLE	1	NOUL (10/0.10+28/0.10)*2F JACKET BLACK OD2.8*5.6mm
②	CONN	2	RCA PLUG FEMALE NI-PLATED INSULATOR COLOR:BROWN
①	CONN	2	RCA PLUG MALE BLOSSOM TYPE NI-PLATED INSULATOR COLOR:BROWN
NO.	NAME	QTTY	SPECIFICATION
		4	

Cnc Tech, LLC			
Industrial Cable and Connector Technology			
DRAWN BY	LICHENG	DRAWING NO.	VG/LJQ-094-081-B
CHECKED BY		CUSTOMER	CNC
APPROVAL BY		ITEM NO.	770-20010-00150
DECIDE BY		DATE	2012-12-28
VERSIONS / EDITION	A/0	PROJECTION	

Units: mm



PIN ASSIGNMENT:



Electrical test:
 1. 100% short, open, miswire test
 2. Conduct resistance: 2 Ohm(max)
 3. Insulation resistance: 5Mohm(min)
 4. dielectric test: DC 300V

NOTE:
 1. 小PE袋/大PE袋对应料号, 包装袋数量及时间印刷样式:

CnC Tech, LLC Industrial Cable and Connector Technology 770-20010-00200 10 PCS	图号/产品料号 图号/生产物料号 图号/物料数量
529	表示529009年(按每次生产周期印)

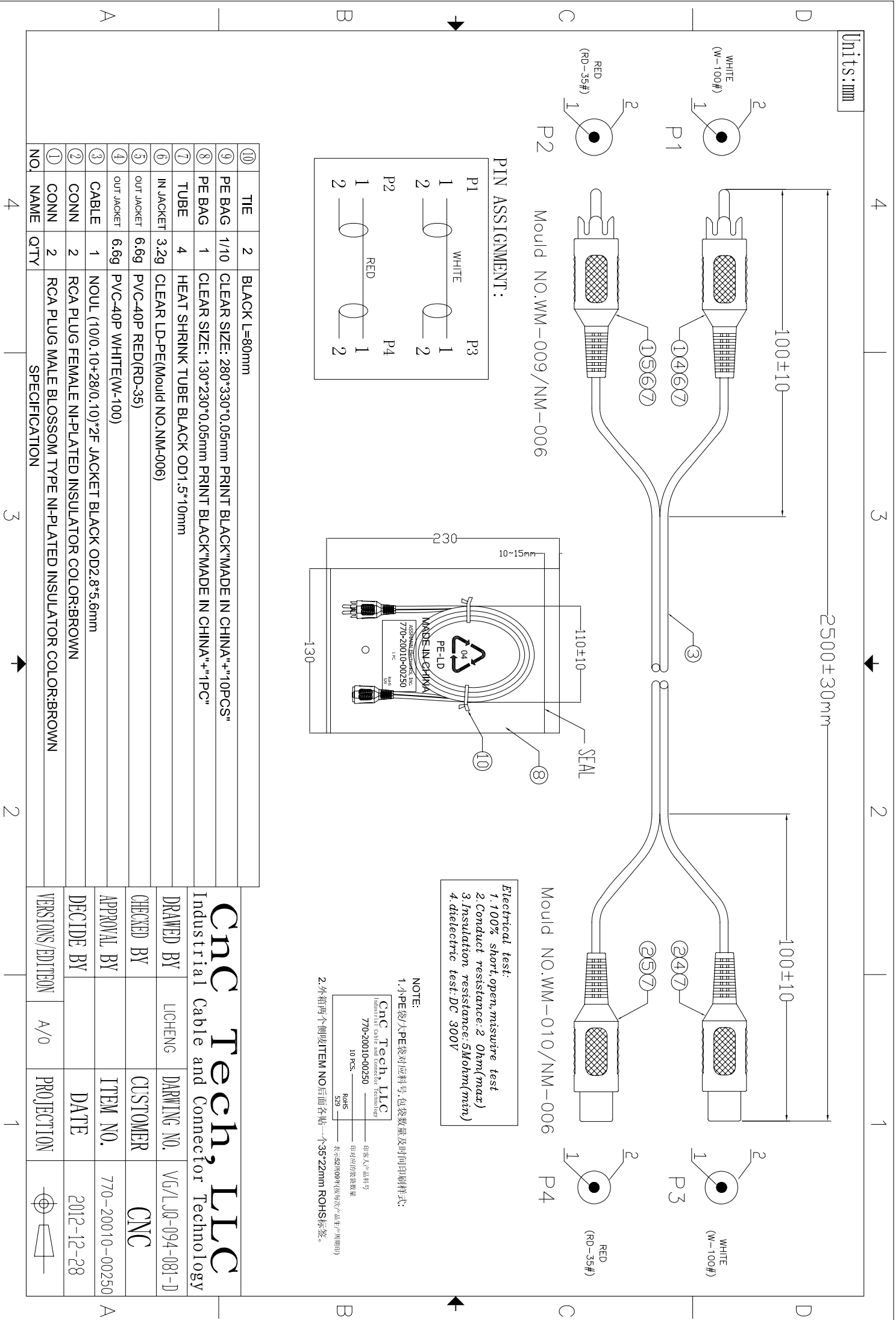
2. 外箱两个侧贴ITEM NO后面各贴一个35*22mm ROHS标签。

⑩	TIE	2	BLACK L=80mm
⑨	PE BAG	1/10	CLEAR SIZE: 280*330*0.05mm PRINT BLACK"MADE IN CHINA"+"10PCS"
⑧	PE BAG	1	CLEAR SIZE: 130*230*0.05mm PRINT BLACK"MADE IN CHINA"+"1PC"
⑦	TUBE	4	HEAT SHRINK TUBE BLACK OD1.5*10mm
⑥	IN JACKET	3.2g	CLEAR LD-PE(Mould NO.NM-006)
⑤	OUT JACKET	6.6g	PVC-40P RED(RD-35)
④	OUT JACKET	6.6g	PVC-40P WHITE(W-100)
③	CABLE	1	NOUL (10/0.10+28/0.10)*2F JACKET BLACK OD2.8*5.6mm
②	CONN	2	RCA PLUG FEMALE NI-PLATED INSULATOR COLOR:BROWN
①	CONN	2	RCA PLUG MALE BLOSSOM TYPE NI-PLATED INSULATOR COLOR:BROWN
NO.	NAME	QTY	SPECIFICATION
		4	

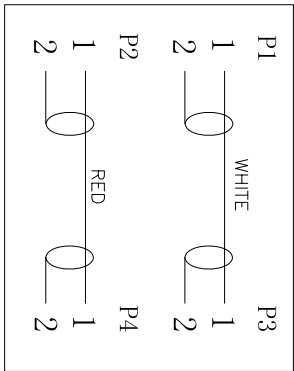
CnC Tech, LLC
 Industrial Cable and Connector Technology

DRAWN BY	LICHENG	DRAWING NO.	V6/LJ08-094-081-C
CHECKED BY		CUSTOMER	CNC
APPROVAL BY		ITEM NO.	770-20010-00200
DECIDE BY		DATE	2012-12-28
VERSIONS/EDITION	A/0	PROJECTION	

Units: mm



PIN ASSIGNMENT:



Electrical test:
 1. 100% short, open, miswire test
 2. Conduct resistance: 2 Ohm(max)
 3. Insulation resistance: 5Mohm(min)
 4. dielectric test: DC 300V

NOTE:
 1. 小PE袋/大PE袋对应料号, 包装袋数量及时间印刷样式:

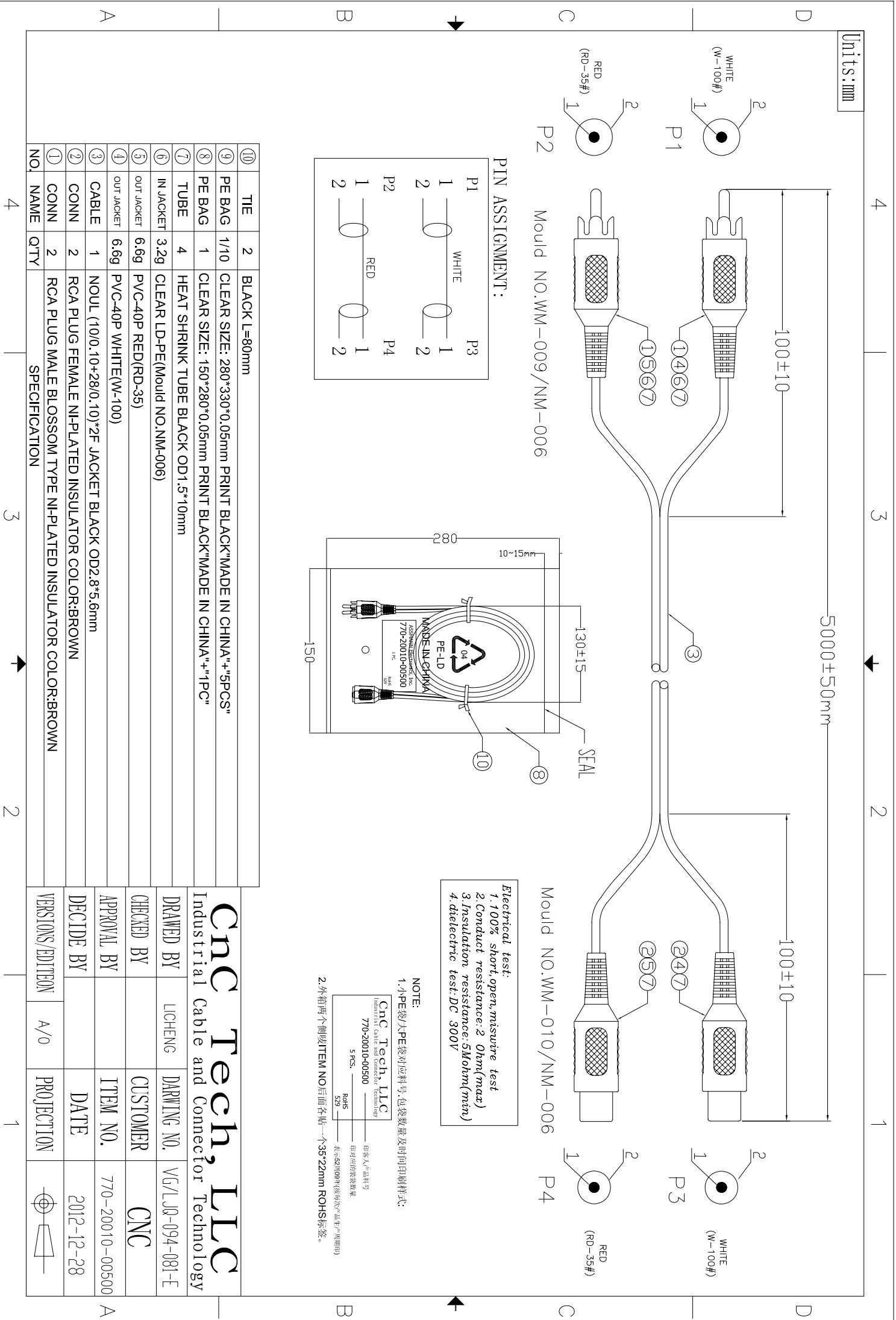
CnC Tech, LLC Industrial Cable and Connector Technology 770-20010-00250 10 PCS	图号/产品料号 770-20010-00250 图号/图例袋数量 10 PCS
--	--

2. 外箱两个侧贴ITEM NO后面各贴一个35*22mm ROHS标签。

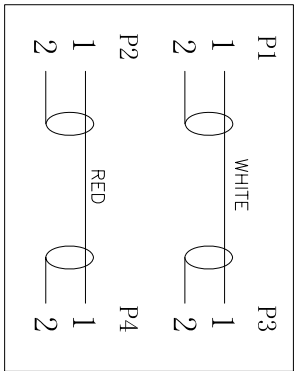
⑩	TIE	2	BLACK L=80mm
⑨	PE BAG	1/10	CLEAR SIZE: 280*330*0.05mm PRINT BLACK"MADE IN CHINA"+"10PCS"
⑧	PE BAG	1	CLEAR SIZE: 130*230*0.05mm PRINT BLACK"MADE IN CHINA"+"1PC"
⑦	TUBE	4	HEAT SHRINK TUBE BLACK OD1.5*10mm
⑥	IN JACKET	3.2g	CLEAR LD-PE(Mould NO.NM-006)
⑤	OUT JACKET	6.6g	PVC-40P RED(RD-35)
④	OUT JACKET	6.6g	PVC-40P WHITE(W-100)
③	CABLE	1	NOUL (10/0.10+28/0.10)*2F JACKET BLACK OD2.8*5.6mm
②	CONN	2	RCA PLUG FEMALE NI-PLATED INSULATOR COLOR:BROWN
①	CONN	2	RCA PLUG MALE BLOSSOM TYPE NI-PLATED INSULATOR COLOR:BROWN
NO.	NAME	QTY	SPECIFICATION
		4	

CnC Tech, LLC			
Industrial Cable and Connector Technology			
DRAWN BY	LICHENG	DRAWING NO.	V6/LJ08-094-081-D
CHECKED BY		CUSTOMER	CNC
APPROVAL BY		ITEM NO.	770-20010-00250
DECIDE BY		DATE	2012-12-28
VERSIONS/EDITION	A/0	PROJECTION	

Units: mm



PIN ASSIGNMENT:



Electrical test:
 1. 100% short, open, miswire test
 2. Conduct resistance: 2 Ohm(max)
 3. Insulation resistance: 5Mohm(min)
 4. dielectric test: DC 300V

NOTE:
 1. 小PE袋/大PE袋对应料号, 包装袋数量及时间印刷样式:

Cnc Tech, LLC Industrial Cable and Connector Technology 770-20010-00500	图号/产品料号 770-20010-00500
5 pcs.	图号/图例袋数量
ROHS	是否527009年(袋每次生产周册印)

2. 外箱两个侧贴ITEM NO后面各贴一个35*22mm ROHS标签。

⑩	TIE	2	BLACK L=80mm
⑨	PE BAG	1/10	CLEAR SIZE: 280*330*0.05mm PRINT BLACK"MADE IN CHINA"+"5PCS"
⑧	PE BAG	1	CLEAR SIZE: 150*280*0.05mm PRINT BLACK"MADE IN CHINA"+"1PC"
⑦	TUBE	4	HEAT SHRINK TUBE BLACK OD1.5*10mm
⑥	IN JACKET	3.2g	CLEAR LD-PE(Mould NO.NM-006)
⑤	OUT JACKET	6.6g	PVC-40P RED(RD-35)
④	OUT JACKET	6.6g	PVC-40P WHITE(W-100)
③	CABLE	1	NOUL (10/0.10+28/0.10)*2F JACKET BLACK OD2.8*5.6mm
②	CONN	2	RCA PLUG FEMALE NI-PLATED INSULATOR COLOR:BROWN
①	CONN	2	RCA PLUG MALE BLOSSOM TYPE NI-PLATED INSULATOR COLOR:BROWN
NO.	NAME	QTY	SPECIFICATION

Cnc Tech, LLC
 Industrial Cable and Connector Technology

DRAWN BY	LICHENG	DRAWING NO.	V6/LJ0-094-081-E
CHECKED BY		CUSTOMER	CNC
APPROVAL BY		ITEM NO.	770-20010-00500
DECIDE BY		DATE	2012-12-28
VERSIONS/EDITION	A/0	PROJECTION	